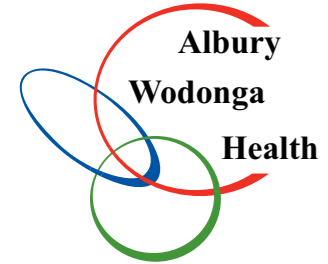
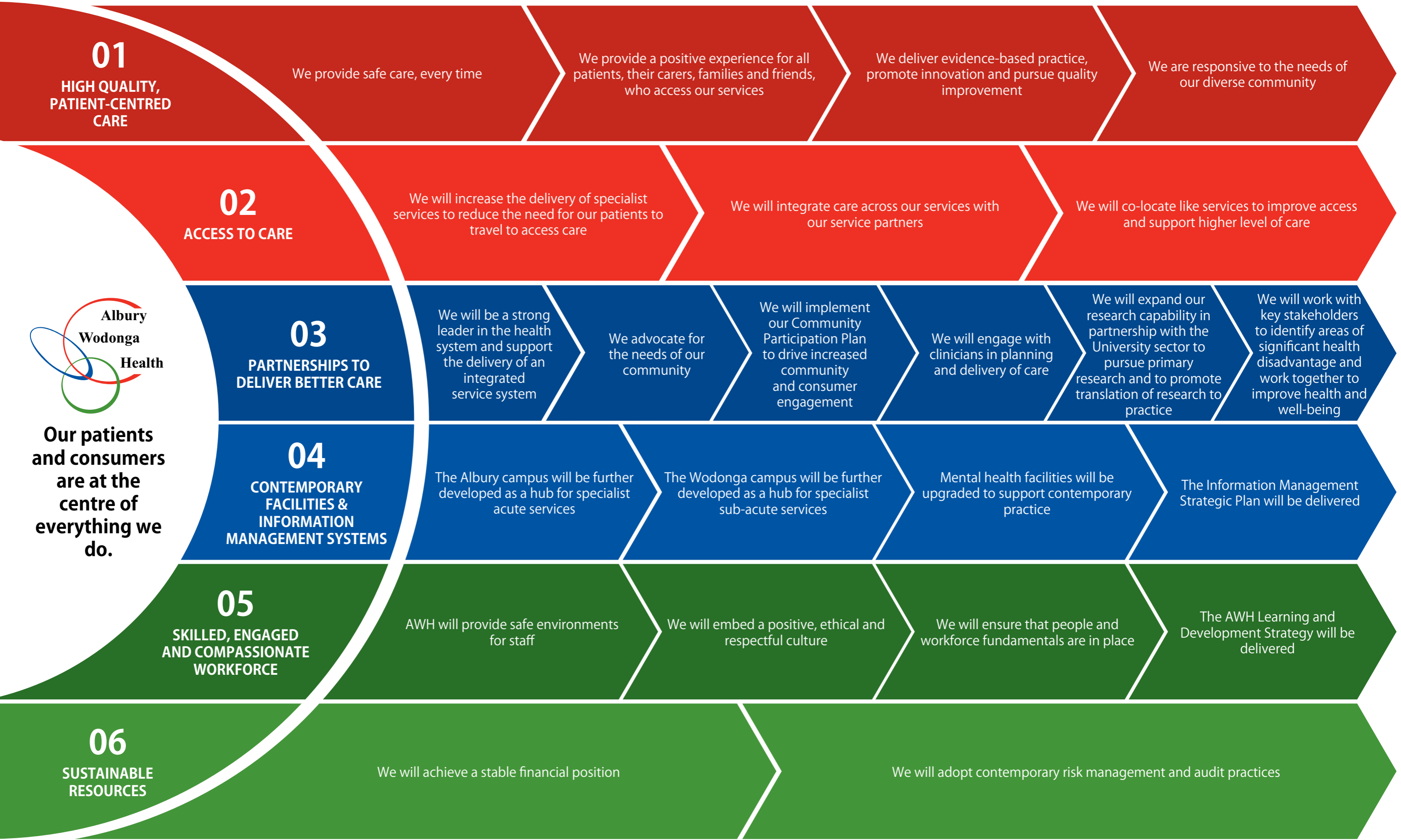


# AWH Strategic Plan 2018 - 2021



**Our patients and consumers are at the centre of everything we do.**



## 01 HIGH QUALITY, PATIENT-CENTRED CARE

We provide safe care, every time

We provide a positive experience for all patients, their carers, families and friends, who access our services

We deliver evidence-based practice, promote innovation and pursue quality improvement

We are responsive to the needs of our diverse community

## 02 ACCESS TO CARE

We will increase the delivery of specialist services to reduce the need for our patients to travel to access care

We will integrate care across our services with our service partners

We will co-locate like services to improve access and support higher level of care

## 03 PARTNERSHIPS TO DELIVER BETTER CARE

We will be a strong leader in the health system and support the delivery of an integrated service system

We advocate for the needs of our community

We will implement our Community Participation Plan to drive increased community and consumer engagement

We will engage with clinicians in planning and delivery of care

We will expand our research capability in partnership with the University sector to pursue primary research and to promote translation of research to practice

We will work with key stakeholders to identify areas of significant health disadvantage and work together to improve health and well-being

## 04 CONTEMPORARY FACILITIES & INFORMATION MANAGEMENT SYSTEMS

The Albury campus will be further developed as a hub for specialist acute services

The Wodonga campus will be further developed as a hub for specialist sub-acute services

Mental health facilities will be upgraded to support contemporary practice

The Information Management Strategic Plan will be delivered

## 05 SKILLED, ENGAGED AND COMPASSIONATE WORKFORCE

AWH will provide safe environments for staff

We will embed a positive, ethical and respectful culture

We will ensure that people and workforce fundamentals are in place

The AWH Learning and Development Strategy will be delivered

## 06 SUSTAINABLE RESOURCES

We will achieve a stable financial position

We will adopt contemporary risk management and audit practices

**Our vision:** Albury Wodonga Health - The Best of Health

**Our Purpose:** We deliver complex health services to improve the health and well-being of our cross-border community

**DRAFT - PENDING FORMAL APPROVAL BY THE VICTORIAN MINISTER OF HEALTH**